



# ELITE LINE INDUSTRIAL CORPORATION.

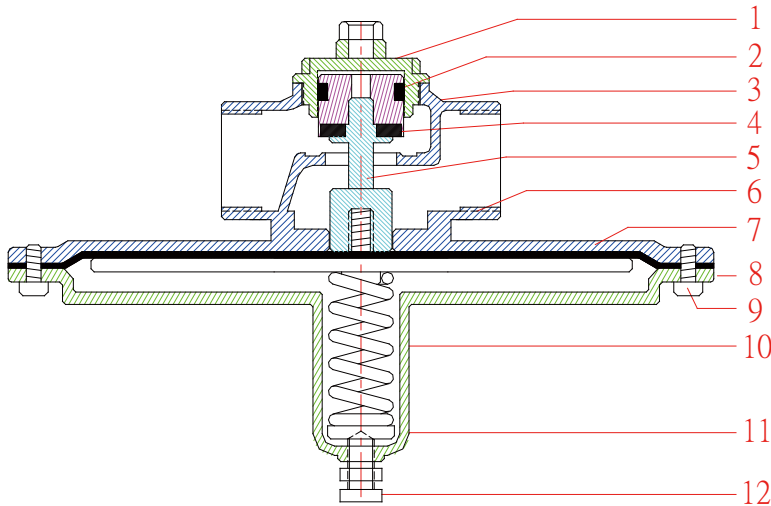
No.40, Jialing St., Cianjhen District, Kaohsiung City 80656, Taiwan..

Tel No. : 886-7-331-1060

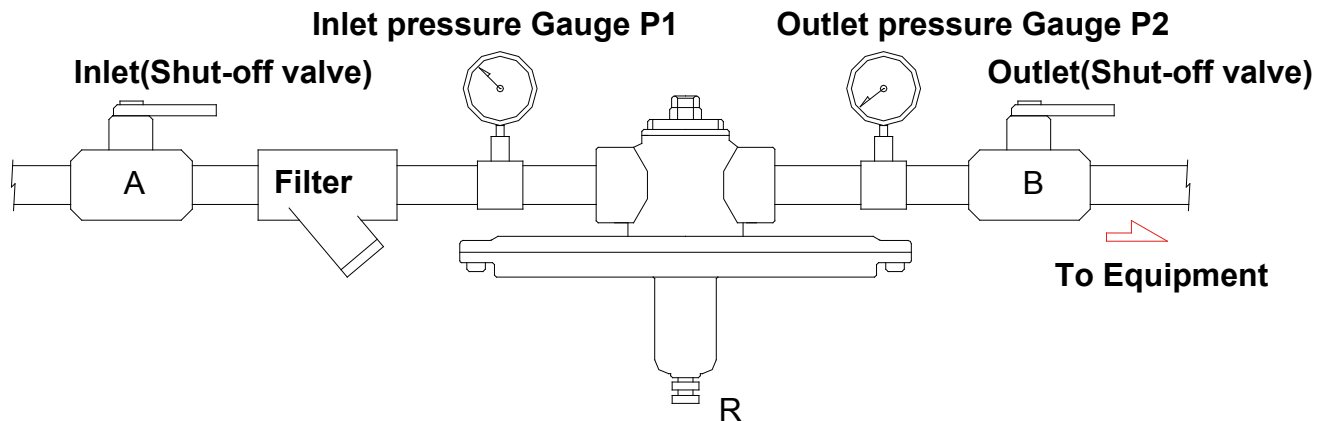
Fax No. : 886-7-331-0100

<http://www.watervalve.com.tw>

## The Installation of Micro Pressure Direct-Activated Pressure Reducing Valve :



| No | Part Name    | Material              |
|----|--------------|-----------------------|
| 1  | Cover        | Stainless Steel # 316 |
| 2  | UH-Ring      | Depend on Fluid       |
| 3  | Piston       | Stainless Steel # 316 |
| 4  | Sealing      | Depend on Fluid       |
| 5  | Shaft        | Stainless Steel # 316 |
| 6  | Main Body    | Stainless Steel # 316 |
| 7  | Diaphragm    | Depend on Fluid       |
| 8  | Spring Cover | Stainless Steel # 316 |
| 9  | Stem         | Stainless Steel # 304 |
| 10 | Spring       | Spring Steel          |
| 11 | Washer       | Brass                 |
| 12 | Stem         | Stainless Steel # 304 |



### Before Installation:

1. Clean & remove all the impurities inside the pipe. A filter is recommended to install.
2. Make sure the direction is correct.
3. Setting pressure gets higher by turning the adjusting stem clockwise.
4. The pressure gauge indicates the outlet pressure.
5. The horizontal installation is obligatory. (The adjusting stem points down)

### Adjusting The Setting Pressure:

1. Equip the Micro-Pressure DAPRV on the pipe in horizon (at this moment, the valve A and B are closed type)
2. Turn the adjusting stem by anti-clockwise direction to the lowest pressure
3. Fully open Valve B and then open Valve A to 1/3 open
4. Close Valve B slowly and make sure the pressure gauge of P2 is in normal range
5. If correct, turn Valve B to fully closed slowly
6. Turn the adjusting stem R by clockwise direction (pressure will be going up) to the set pressure
7. Slowly turn Valve A from 1/3 open to fully open
8. Shut off Valve B slowly to check the valve can well function by reducing the pressure
9. Open and close Valve B for several times slowly to check whether the pressure is correct or not
10. Open Valve B, and fix the adjusting stem to the correct set pressure.